

King *Realty, Inc.*

**Atlanta Industrial Market
Second Quarter 2008**

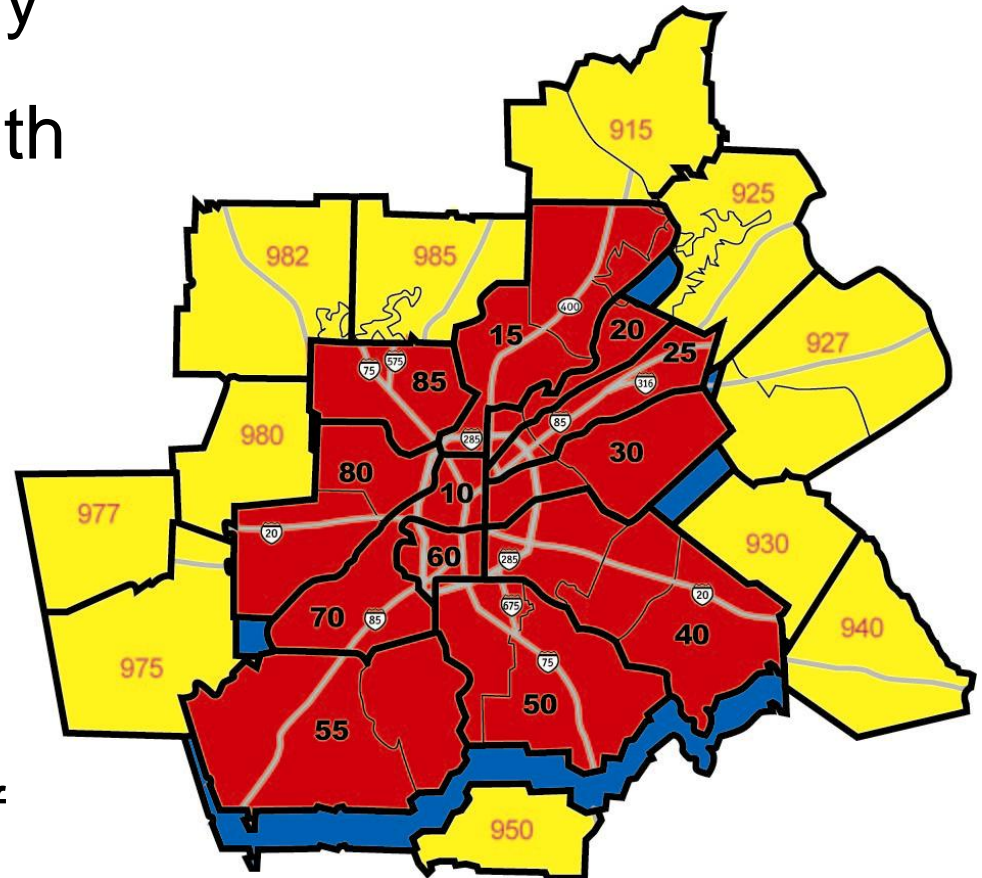
➤ PinPointsm Technology

– 23 market areas with

- 605 million sq. ft. of distribution
- 12,500 buildings
- 26,000 businesses

– **12 core markets**

- 501 million sq. ft. of distribution



Market Inventory: 1999-2008



CORFAC
International

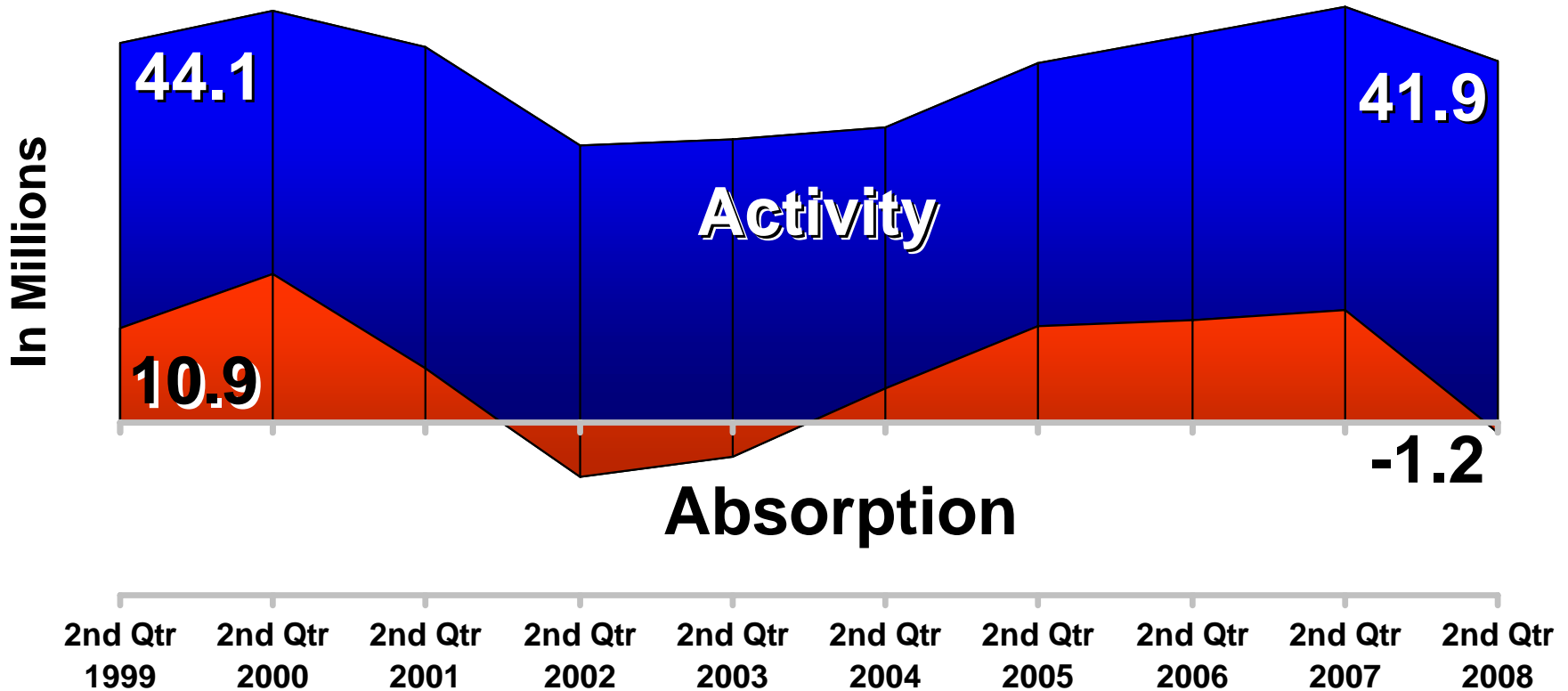


Numbers represent the 12 core markets.

Absorption and Activity

King

CORFAC
International

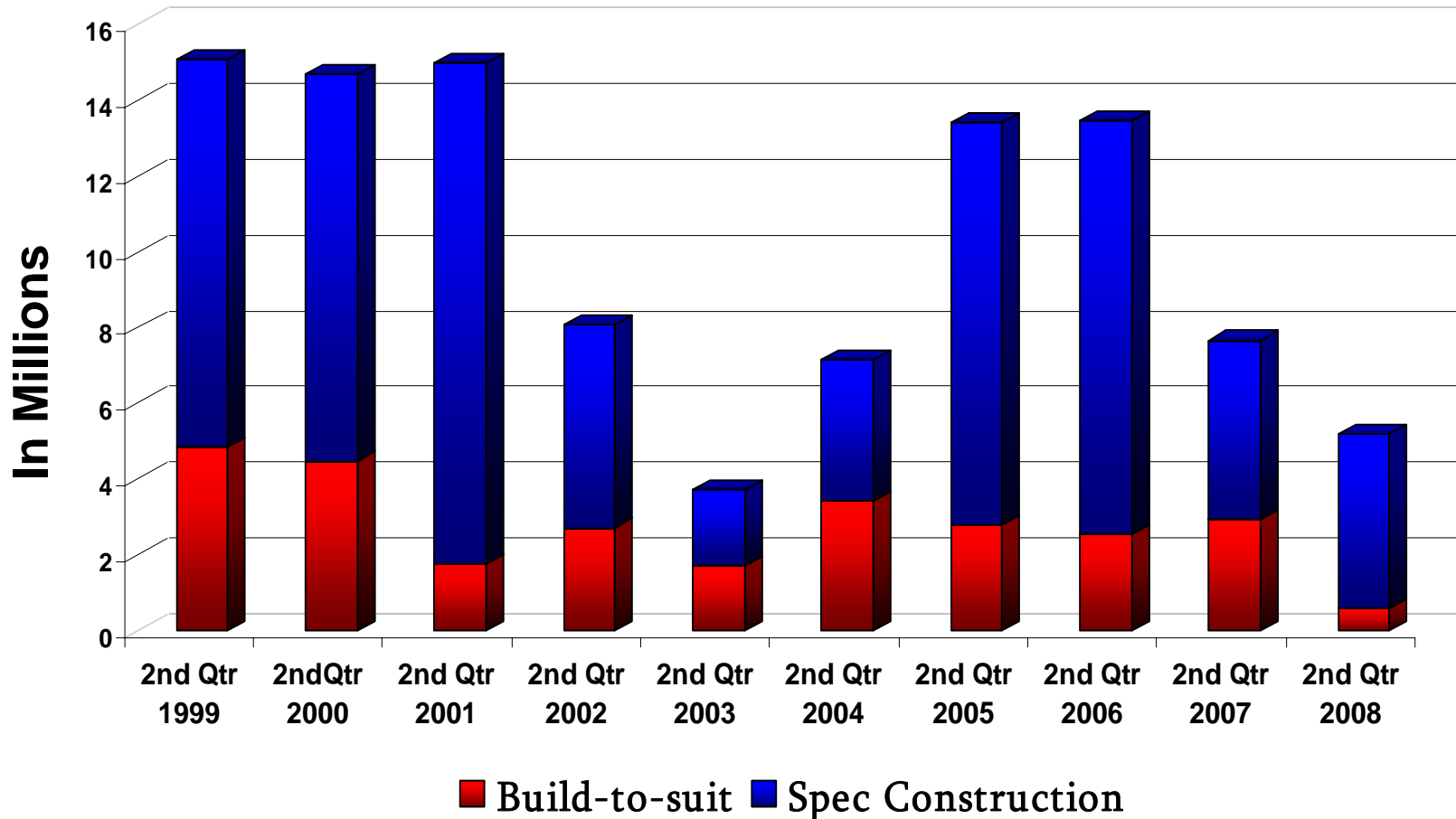


Numbers represent the 12 core markets for four rolling quarters.

New Construction: 1999-2008

King

CORFAC
International

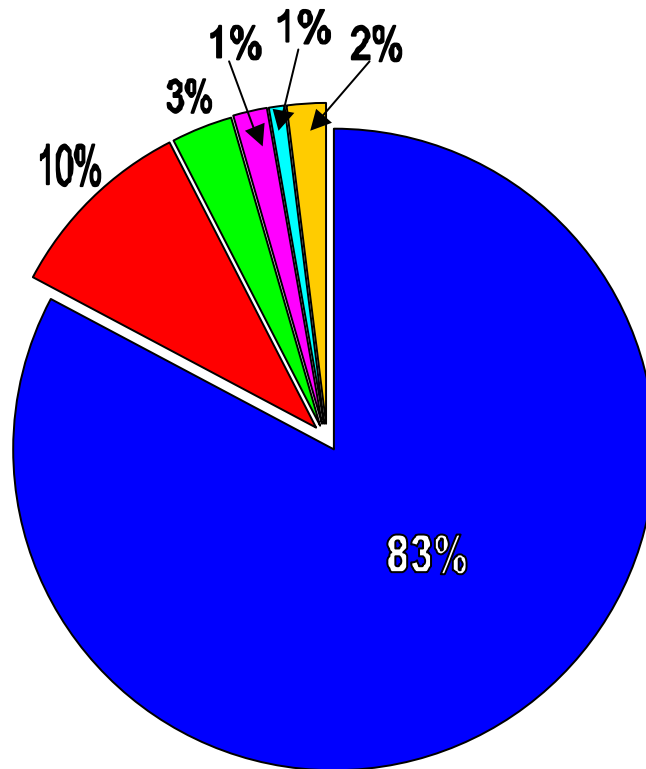


Numbers represent the 12 core markets for four rolling quarters.

Deals Completed



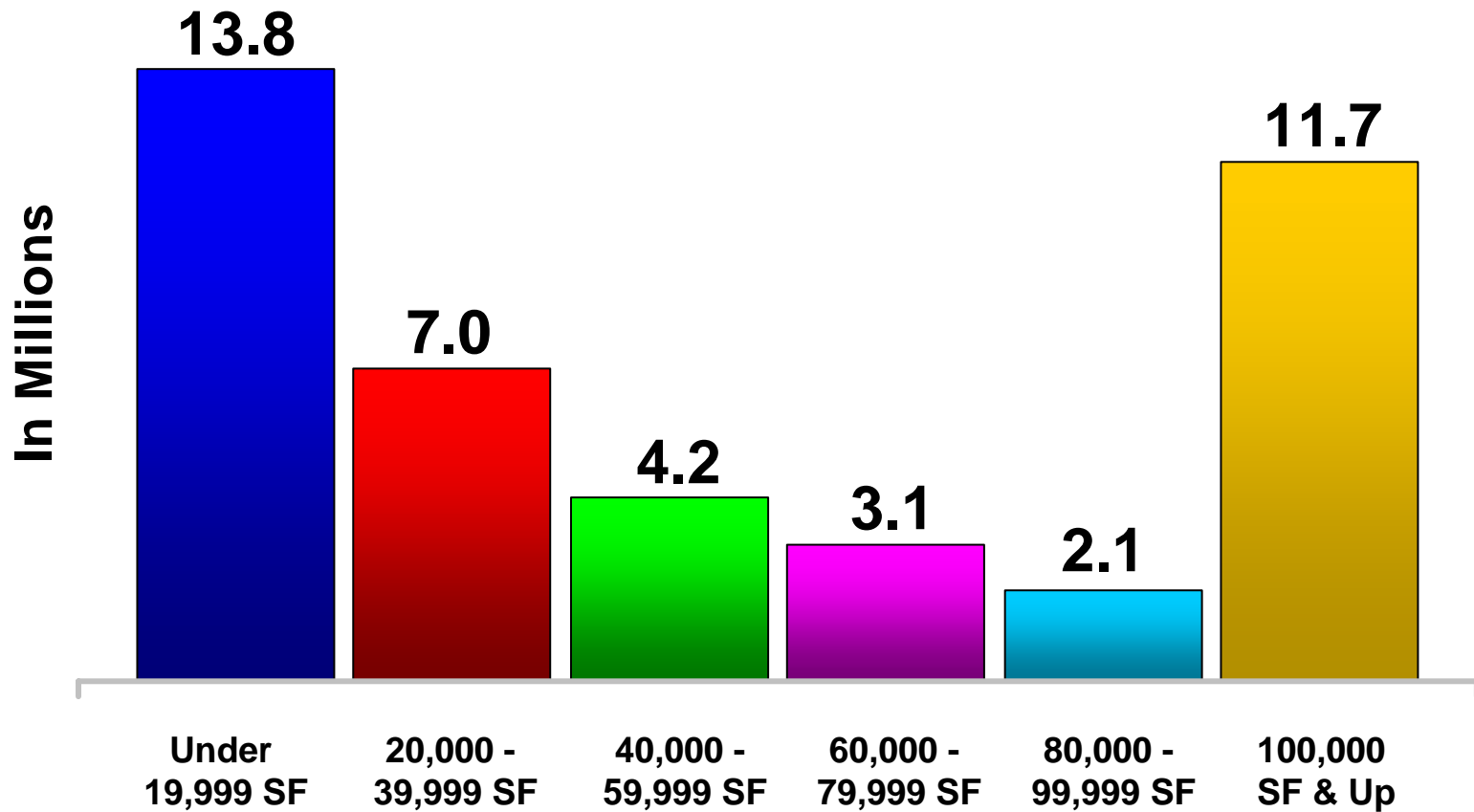
CORFAC
International



- Under 19,999 SF
- 20,000-39,999 SF
- 40,000-59,999 SF
- 60,000-79,999 SF
- 80,000-99,999 SF
- 100,000 & up

Numbers represent the 12 core markets for four rolling quarters.

Square Feet Leased



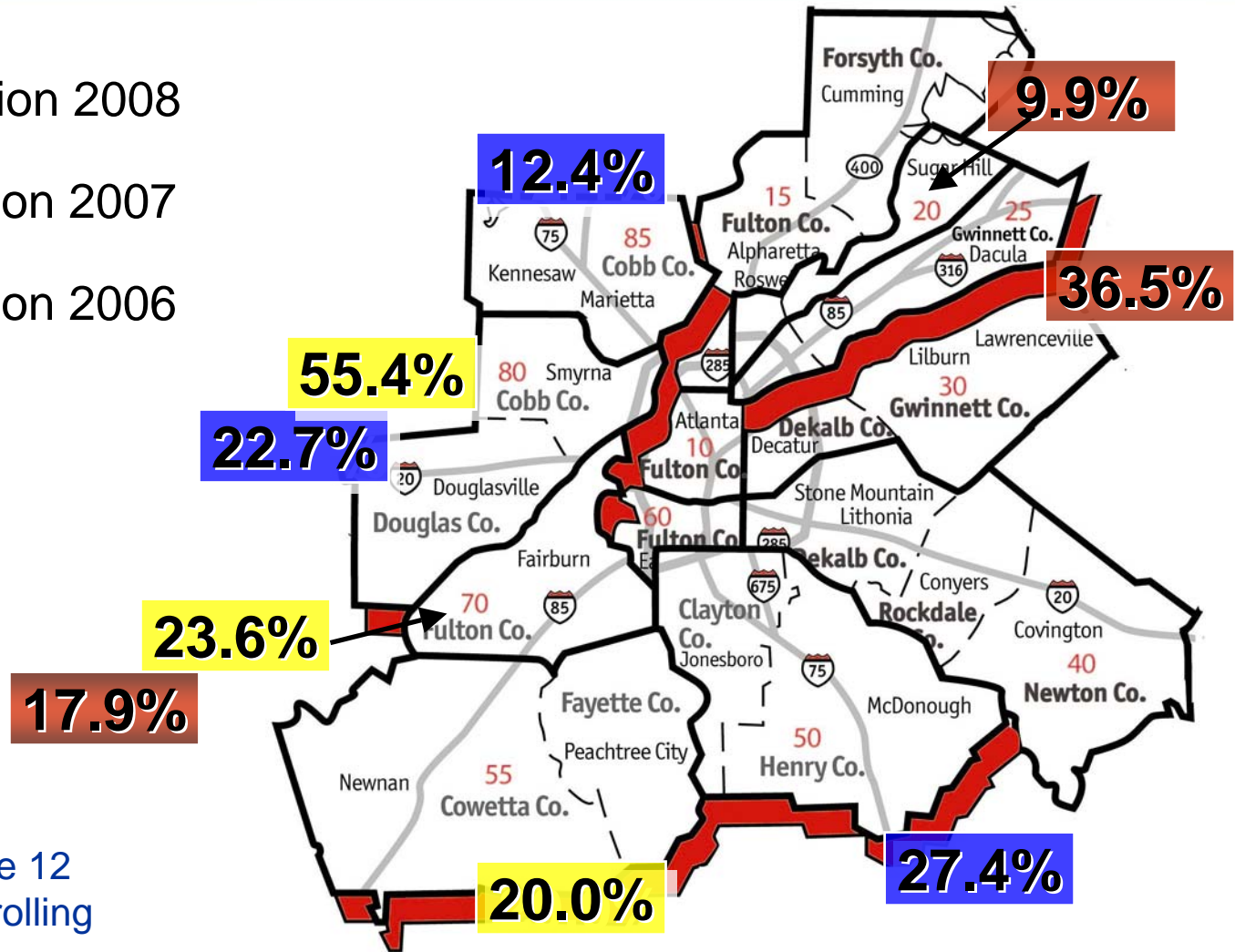
Numbers represent the 12 core markets for four rolling quarters.

Distribution Hot Markets

KING

CORFAC
International

- Absorption 2008
- Absorption 2007
- Absorption 2006



Numbers represent the 12 core markets for four rolling quarters.